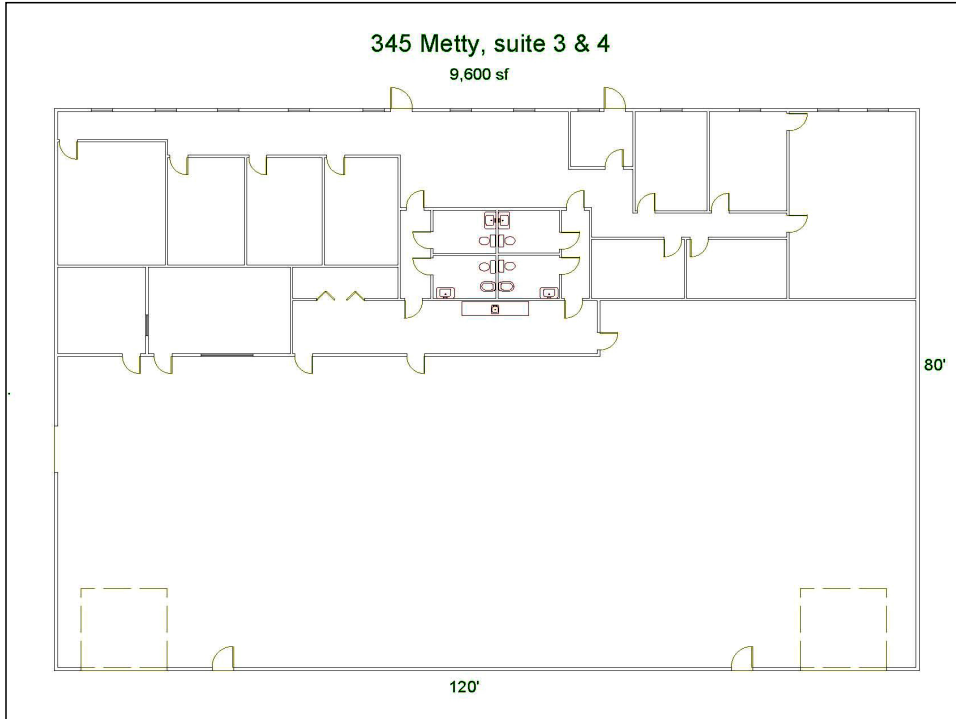


For Lease

345 METTY Drive, Suite 3 & 4

SCIO TOWNSHIP, ANN ARBOR, MICHIGAN

9,600 sf Flex space



LOCATION: Conveniently located in Scio Commerce Center, off Jackson Avenue between Baker and Zeeb. Easy access to I-94 and M-14 with close proximity to US-23. Ann Arbor address with township taxes!

BUILDING: Built 1984, this attractive single story building is 9,600 sf with 3,840 SF of office space, and 5,760 SF of manufacturing space.

Manufacturing space is easily accessible from offices. Ceiling height is 14', features two 12' x 12' overhead doors and 400 amps of 208 volt 3-phase electric. Gas fired radiant tube heat.

ZONING: I-1, Light Industrial, Scio Township, 734-665-2123

PARKING: At the door parking

LEASE TERMS: 36 Months

LEASE RATE: \$6.25/sf NNN. Tax, insurance, and CAM is \$2.20/sf, for a total monthly rent of \$6,760.

Contact: **John Evans**
David Hamilton, CCIM

direct: 734-662-3682
direct: 734-662-3745

evans@swishercommercial.com
daveh@swishercommercial.com

Building relationships.



208 East Washington St. Ann Arbor, MI 48104
tel: 734.663.0501 fax: 734.663.0316
www.swishercommercial.com